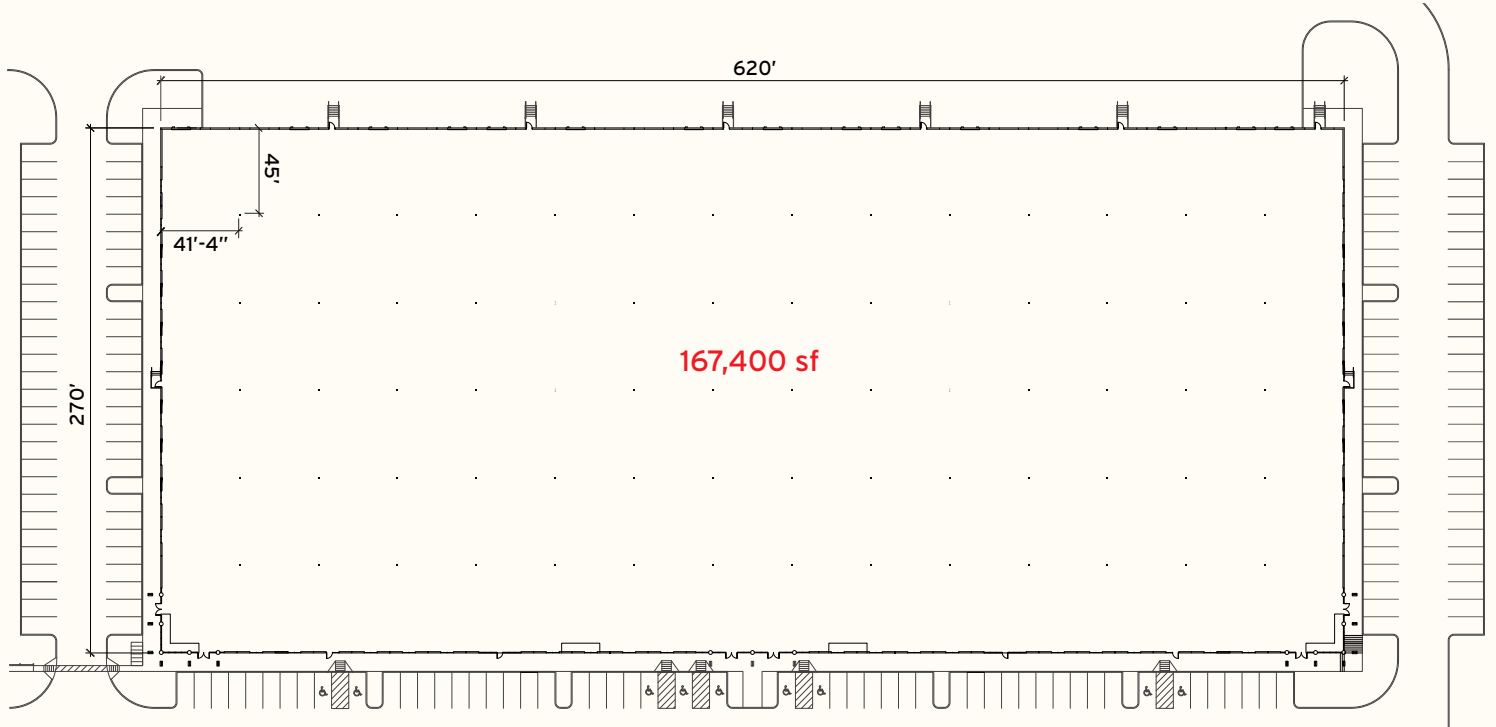


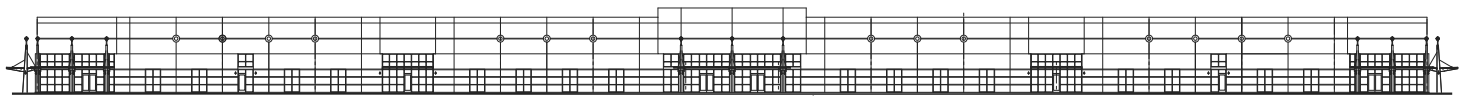


BUILDING 3

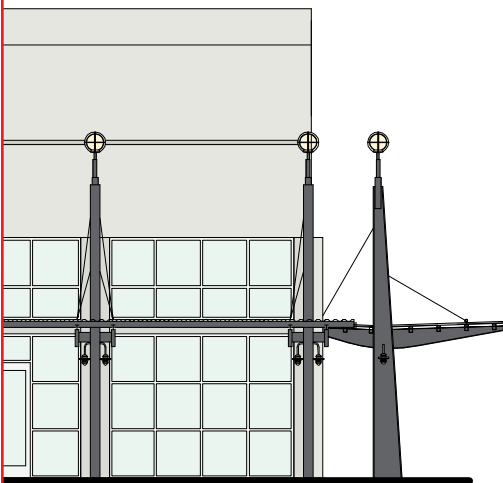


BUILDING 3 PLAN

7100 METROPOLIS DRIVE, AUSTIN, TEXAS 78744



BUILDING 3 ELEVATION



ELEVATION DETAIL

- CONCRETE TILT-WALL CONSTRUCTION
- 24' CLEAR HEIGHT
- DOCK-HIGH LOADING
- 6", 3000 PSI CONCRETE SLAB
- FIRE SUPPRESSION SYSTEM
- CONCRETE TRUCK COURT
- UNDERGROUND, DUAL-FEED POWER & TELECOM CONDUIT
- REDUNDANT POWER, FIBER OPTICS & WATER
- HIGH PARKING RATIOS

**LEASE / BUY
BUILD-TO-SUIT
CO-VENTURE
WHATEVER**



ZYDECO
DEVELOPMENT

ZYDECODEVELOPMENT.COM
512.479.7850
AUSTIN, TEXAS

MORE INFORMATION ABOUT METCENTER ONLINE AT METCENTER.COM OR CALL ZYDECO DEVELOPMENT AT 512.479.7850